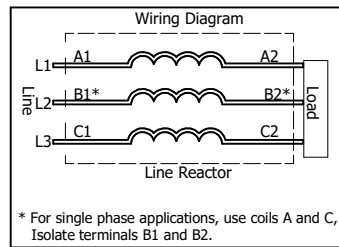
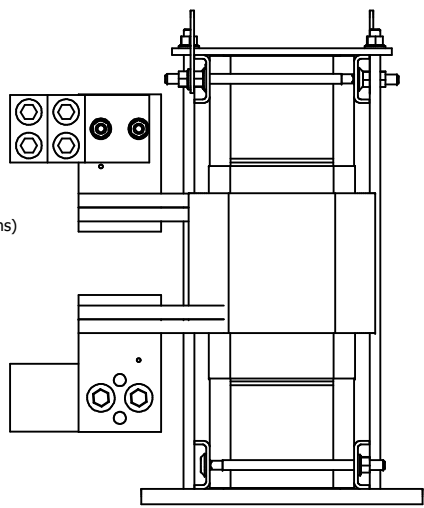


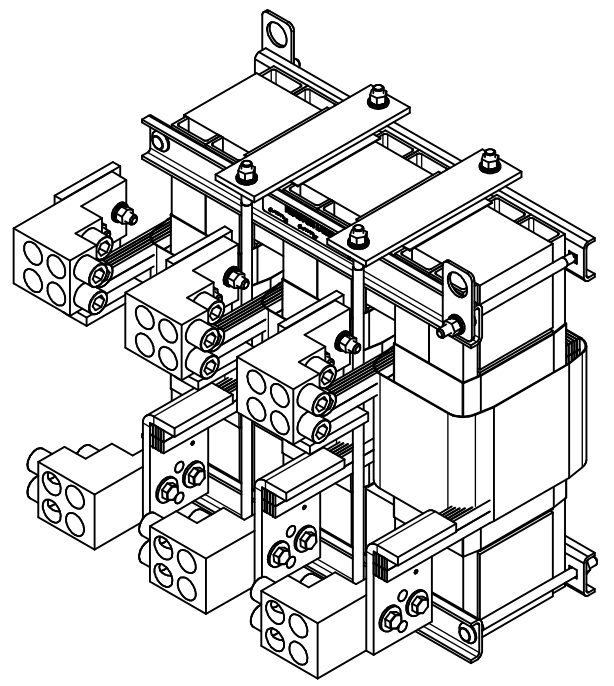
(Customer Connections) Markings On Coil For Reference Only.

0.44 x 0.75 Slots  
4 Places



\* For single phase applications, use coils A and C, Isolate terminals B1 and B2.

480 Rated Voltage, 600 Max Voltage, High Z, Impedance.						
Part Number	Horsepower (HP)	Motor Amps (A)	Maximum Amps (A)	Inductance (uH)	Weight (LBS)	Attached Lug Kit
KDRULX4H	1000	1200	1200	26	295	LK24



**TCL** (900) 824-8282 [transcoil.com](http://transcoil.com)

TCL, LLC  
Germantown, WI, USA  
[transcoil.com](http://transcoil.com)  
800-824-8282

**KDRUL Drive Reactor**  
KDR - Motor Amps -  
3PH, 90/60Hz, -V Rated, 600V Max, -A Max  
40C Amb Max, 135C Rise, 100%  
Manual #30895 LUG KIT #BLK-

UL LISTED  
2003-2018, 2019, 2020

DATE CODE AL

- Notes:
1. KDR Lug Kits sold separately. Contact TCL.
  2. For KDRUL Version With Terminal Lugs Attached, See Sheet 4
  3. UL file number: cULus Listed File E116124.
  4. KDR Drive Reactors Comply With The Thermal and Altitude Standards Set Forth by NEMA ST20-1992.
  5. KDR IOM Manual Part Number 30895
  6. NEC Current For 208/240 Volts, Horsepower Based On 208 Volts.
  7. Material(s) Shall be RoHS Compliant
  8. Customer Is Responsible For Installation To Meet All National And Local Electrical Codes.

THE INFORMATION AND DESIGNS CONTAINED IN THIS DRAWING ARE CONFIDENTIAL AND THE PROPRIETARY PROPERTY OF ALLIED MOTION TECHNOLOGIES INC. AND ITS SUBSIDIARIES. NEITHER THIS DESIGN NOR ANY INFORMATION CONTAINED IN THIS DRAWING MAY BE REPRODUCED OR DISCLOSED TO OTHERS WITHOUT THE EXPRESS WRITTEN CONSENT OF ALLIED MOTION TECHNOLOGIES INC. AND ITS SUBSIDIARIES.

NO	REVISION	DATE	BY
C	6252, KDRULX4H, Lug Updated	4/26/2023	DSW

TOLERANCES (EXCEPT AS NOTED)  
DECIMAL  
.XX ± .25  
.XXX ± .10

FRACTIONAL  
± 1/16  
ANGULAR  
± 1°

**TCL** W132N10611 (Rev 13 Feb 2023)  
Germantown, WI 53022  
© 2023 TCL, LLC  
An Official Motors Company

KDRUL X Frame Reactor Drawing

DRN BY: DSW DATE: 3/5/2018 107539-8DG  
SCALE: 1:3.2 DRAWN: JSE  
SHT 8 OF 8